



EOSS-274

Great Plains Super Launch

Some Maps and Pics

NØLP

13 July 2018

Rev 3

Launch Site, Homedale, OR

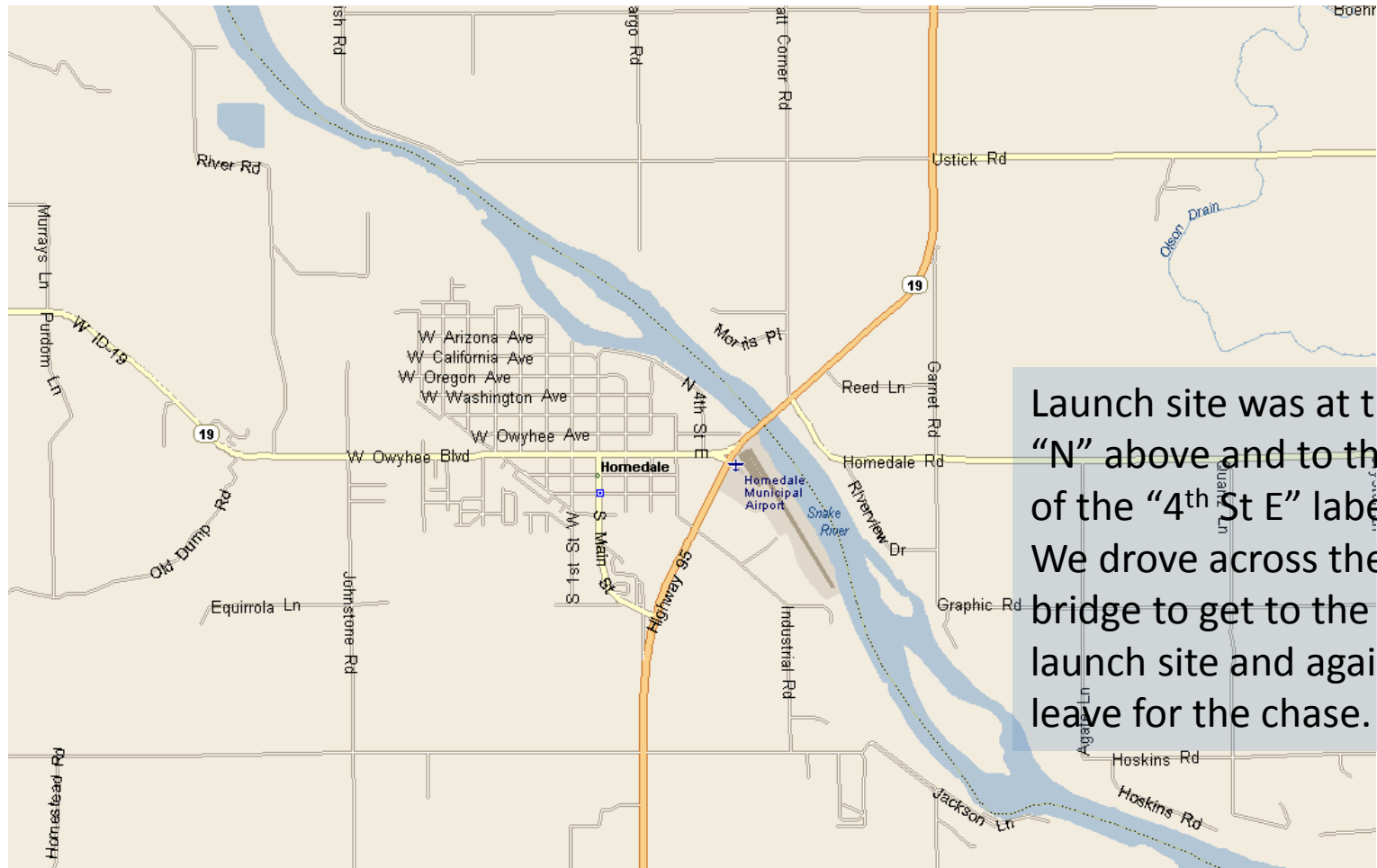


This is a lightly edited picture taken by SamCam2 on the flight string. KCØRPS recovered the pictures from the camera in SamCam2. This picture shows three EOSS pickups are parked next to the road. They're NØNDM's, KDØSEM's & KØSCC's, in that order from the top. (NØNDM's truck is white and doesn't show up as well as the two other, darker colored trucks.) Flight string prep and balloon inflation was done between the pickups and the river (Snake River). We walked the balloon and flight string out into the road for launch. The balloon traveled south over the ball field after launch.

Homedale, OR



Map of Homedale, OR

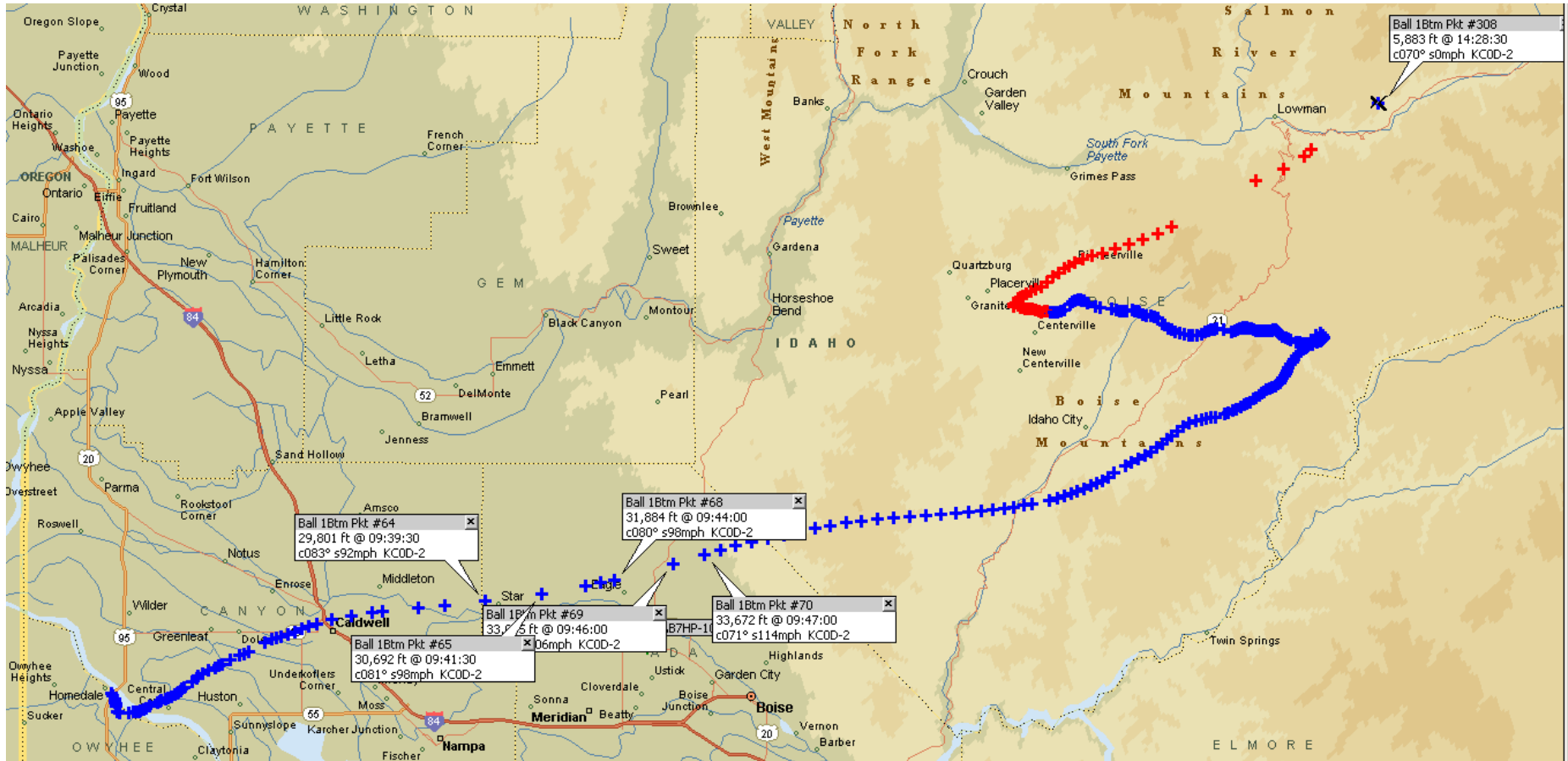


Launch site was at the
“N” above and to the left
of the “4th St E” label.
We drove across the
bridge to get to the
launch site and again to
leave for the chase.

EOSS-274 Launch and Landing Sites



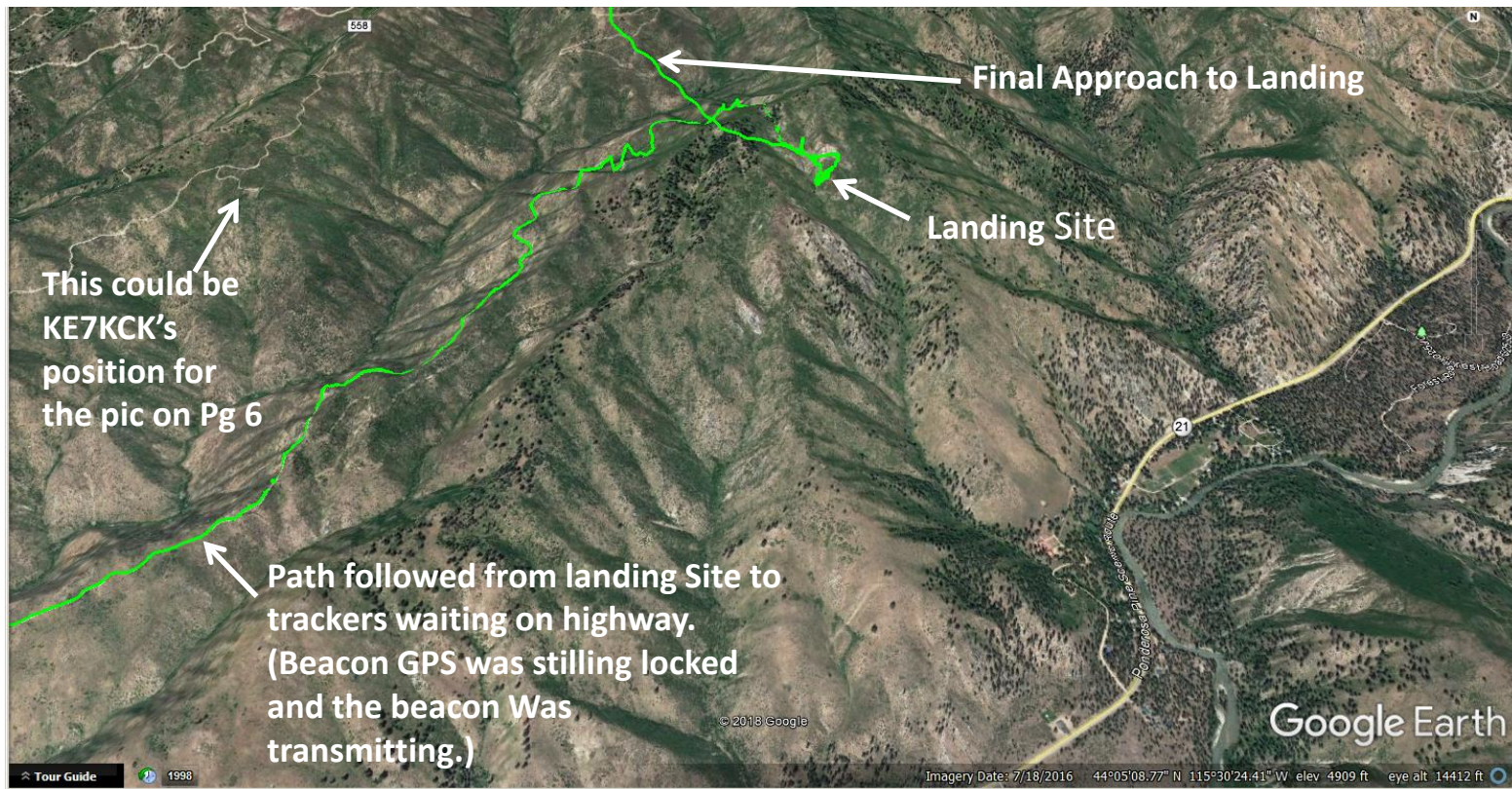
EOSS-274 Flight Path



Picture of the ridge where flight string landed. Actual landing site was just on other side of ridge. Picture taken looking east. (Picture by Tom KE7KCK and landing site data from Jim KCØRPS)



EOSS-274 Landing Area

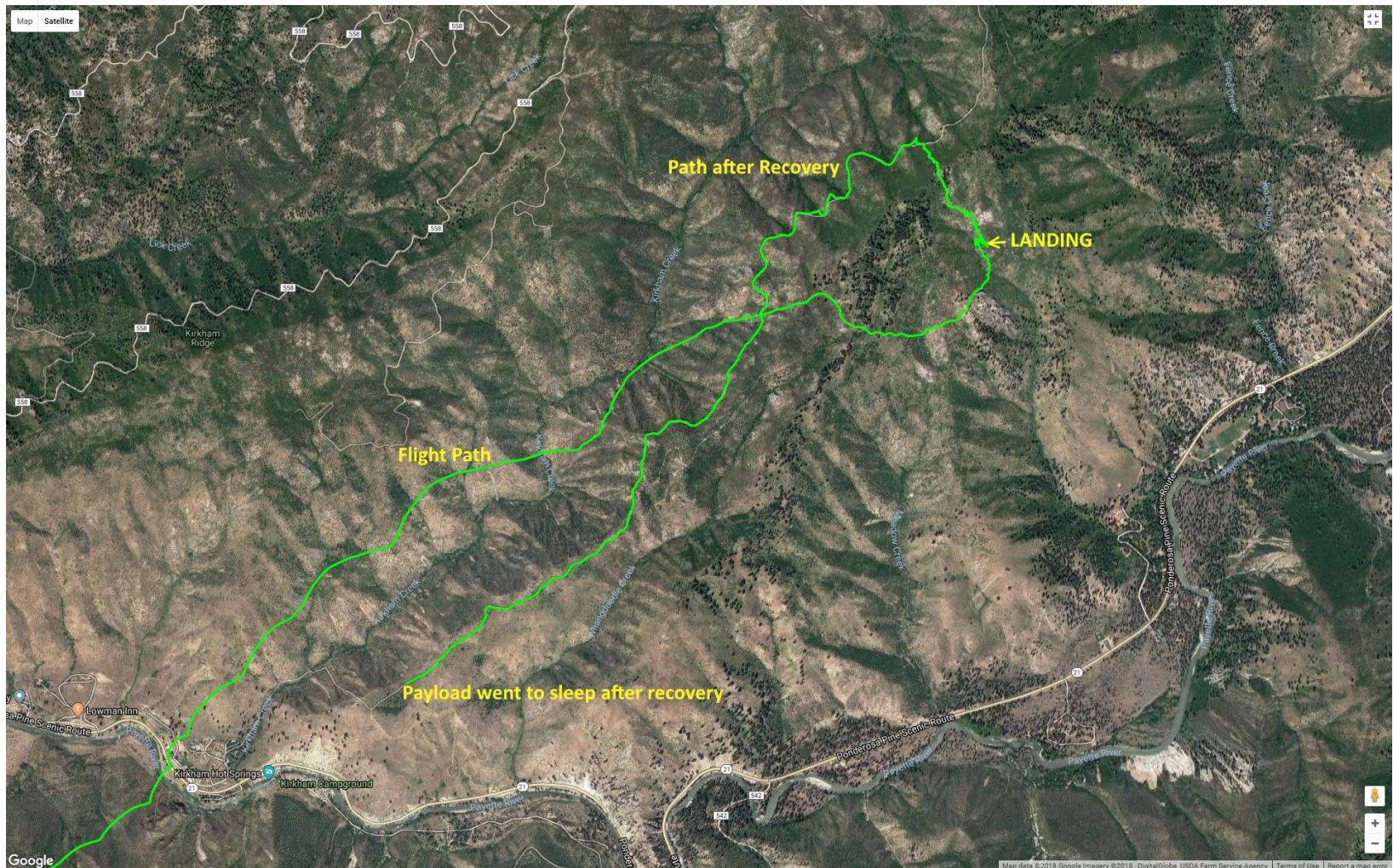


The green flight (and ground) path data is from KCØD. He loaded the on-board stored GPS data into Google Earth and created the picture with the green tracks. On the original picture there are a very large number of packet reports at the landing site location. A picture of that is on the next chart.

Blowup of EOSS-274 Landing Area Showing Recorded GPS Positions



Topographic Image of the Landing Area with Approach Path and Recovery “Ride-out” Shown



Many thanks to KCØD for the fine map work and the great image.

Another fine map by KCØD. This one uses a topo map of the recovery area as base map. Image shows final approach of the balloon (starts in the lower left corner), landing location (small blob on far right side of map, and then recovery path as the motorcyclists, ATV guy, KCØRPS, and KBØYRZ took flight string back to the road where other trackers where gathered. Again the red line stops when the beacons go to sleep.

